



PRODUCT Catalogue

Sicuro Bioengineering Ltd

Sicuro House, 19 East West Rd, Portharcourt, Nigeria. Email: info@sicurobio.com



IVD



Contents

● Introduction & Certifications ----- 1 - 3

● Hematology

Hemia Series Description-----	4
Hemia 3D-----	5
Hemia 5D-----	6
Hemia 60-----	7
Hemia 70-----	8
Reagents-----	9
Anti-Sera-----	10
Rapid Test Kits-----	11

● Chemistry

Chemia Series Description-----	12
Chemia 200-----	13
Chemia 220pro-----	14
Chemia 300-----	15
Chemia 400-----	16
Reagents-----	17
Ordering Information-----	18-19

● Electrolyte

Q-Lyte-60+-----	20
-----------------	----

● Immunofluorescence

Immunia Series Description-----	21
Immunia 100-----	22
Immunia-stat-----	23
Immunia Test-----	24

● Eliza Machine

MPR-110 Plate Reader-----	25
W206 Eliza Microplate Washer-----	26

● Hematocrit Centrifuge

BiOCRIT-24-----	27
-----------------	----

Introduction

SICURO Bioengineering Ltd, is a manufacturer of multiple in-vitro diagnostic (IVD) products, setting a benchmark in the nation's diagnostics sector. We provide reliable and affordable analyzers for chemistry, hematology, immunoassay, and serology, along with reagents and blood grouping anti-sera. By reducing reliance on imports, we support Nigeria's economy and ensure our high-quality products are readily available across Africa.

Our innovative designs and user-friendly software make diagnostics easier and more efficient for laboratories of all sizes.

At SicuroBio, we prioritize our customers' opinions and values, continuously improving to enhance patient services. With a team of over 50 skilled professionals, including engineers, analysts, factory workers, and sales experts, we deliver timely and exceptional service across Nigeria, Africa, and beyond.

We provide high-quality products, technical support, and comprehensive training for medical laboratories, including internal quality control and essential product services. Our commitment to quality is unwavering, with certifications in ISO 9001 and ISO 13485, as well as adherence to GMP and local regulations. With rigorous quality control and a focus on continuous improvement, SICURO Bioengineering ensures reliable, innovative solutions for our customers.



CERTIFICATE

This is to Certify that the Management System of
SICURO BIOENGINEERING LIMITED
 19 East-West Road, Rumuokoro Port Harcourt,
 Rivers State Nigeria

has been audited and found to comply with the requirements of:

ISO 13485:2016
(Medical Devices – Quality Management System)

For the Scope of activities described below:

**Production, Distribution and Technical Support of
 In-Vitro Diagnostic Products**

Certificate No.: NG241217004

<i>Date of initial registration</i>	<i>Date of this Certificate</i>	<i>Surv. audit on or before/ Certificate expiry</i>	<i>Recertification Due</i>
17 December 2024	17 December 2024	16 December 2025	16 December 2027



Validity of this certificate is subject to successful completion of surveillance audit on or before due date, in case surveillance audit not conducted this certificate shall be suspended/cancelled.

Signature

Director

For verification and updated information concerning the present certificate visit to www.lmscert.uk/www.lmscert.com
 This certificate is property of LMS Assessments Limited and remains valid subject to satisfactory surveillance audits and shall be returned immediately when demanded.



LMS Assessments Limited
International Office: Bartle House, Oxford Court, Manchester, M2 3WQ(United Kingdom) **Phone :** +44-161394 1117
 (Company Regd. No. 11029176 Registered in England and Wales)
LMS Assessment Services Private Limited
Corporate Office: TF14, 15 Aarohi arcade, Sector 16, Munshi Puliya, Indira Nagar, Lucknow - 16, India **Phone :** +91 955 464 5464
 Visit :- www.lmscert.uk/www.lmscert.com
 E-mail :- info@lmscert.uk



LMS-FM-109/REV04



CERTIFICATE

This is to Certify that the Management System of
SICURO BIOENGINEERING LIMITED

19 East-West Road, Rumuokoro Port Harcourt,
Rivers State Nigeria

has been audited and found to comply with the requirements of:

ISO 9001:2015
(Quality Management System)

For the Scope of activities described below:

**Production, Distribution and Technical Support of
In-Vitro Diagnostic Products**

Certificate No.: NG241217003

<i>Date of initial registration</i>	<i>Date of this Certificate</i>	<i>Surv. audit on or before/ Certificate expiry</i>	<i>Recertification Due</i>
17 December 2024	17 December 2024	16 December 2025	16 December 2027



Validity of this certificate is subject to successful completion of surveillance audit on or before due date, in case surveillance audit not conducted this certificate shall be suspended/cancelled.

Director

For verification and updated information concerning the present certificate visit to www.lmscert.uk/www.lmscert.com
This certificate is property of LMS Assessments Limited and remains valid subject to satisfactory surveillance audits and shall be returned immediately when demanded.



LMS Assessments Limited
International Office: Bartle House, Oxford Court, Manchester, M2 3WQ(United Kingdom) **Phone :** +44-161394 1117
(Company Regd. No. 11029176 Registered in England and Wales)
LMS Assessment Services Private Limited
Corporate Office: TF14, 15 Aarohi arcade, Sector 16, Munshi Puliya, Indira Nagar, Lucknow - 16, India **Phone :** +91 955 464 5464
Visit :- www.lmscert.uk/www.lmscert.com
E-mail :- info@lmscert.uk



LMS-FM-109/REV04



HEMATOLOGY

The HEMIA Series: Auto Hematology Analyzers

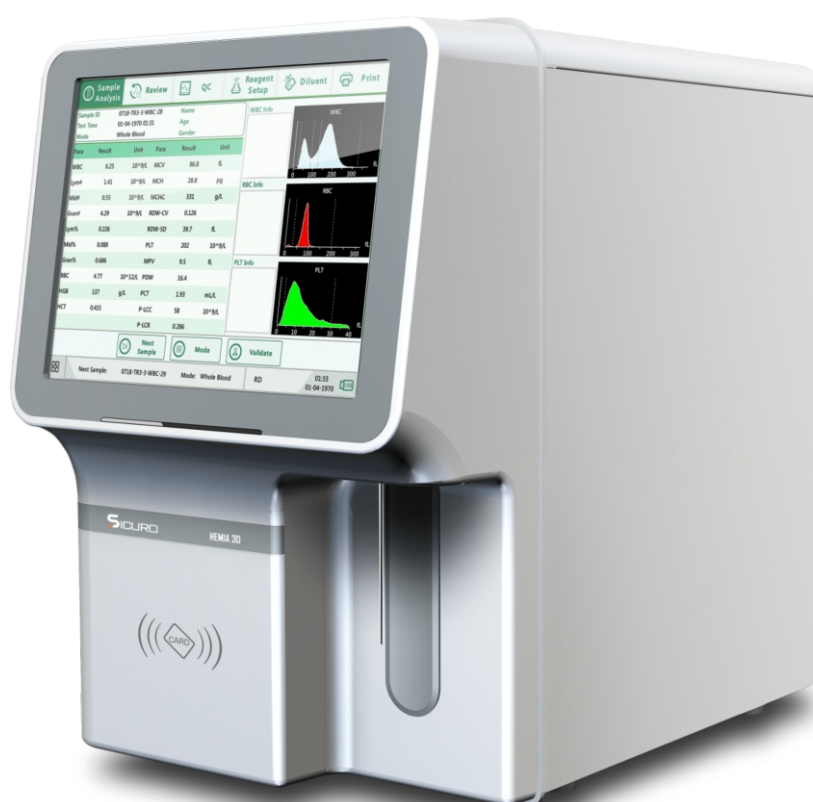
The HEMIA Series belongs to a family of Sicuro fully automated hematology analyzers, the analyzers include HEMIA 3D, 5D, 60, and 70, with a throughput of 60 tests per hour, except Hemia 70 with a throughput of 70 samples/hr.

Designed for hospitals, labs, blood banks, and disease control centers, these analyzers provide reliable, high-capacity, and accurate performance. Standout features include quick results in just one minute using only 18 μ L of blood sample, advanced WBC differentiation, and cyanide-free HGB testing.

The HEMIA 60 and 70 models also feature W-CRP and SAA testing for inflammation markers. With built-in reagent storage, refrigeration, and touch displays, the HEMIA Series saves space and ensures ease of use. Automatic fault handling and traceable results add to its efficiency and reliability, making it a trusted choice for hematology diagnostics.

HEMIA 3D

3 Part Auto Hematology Analyzer

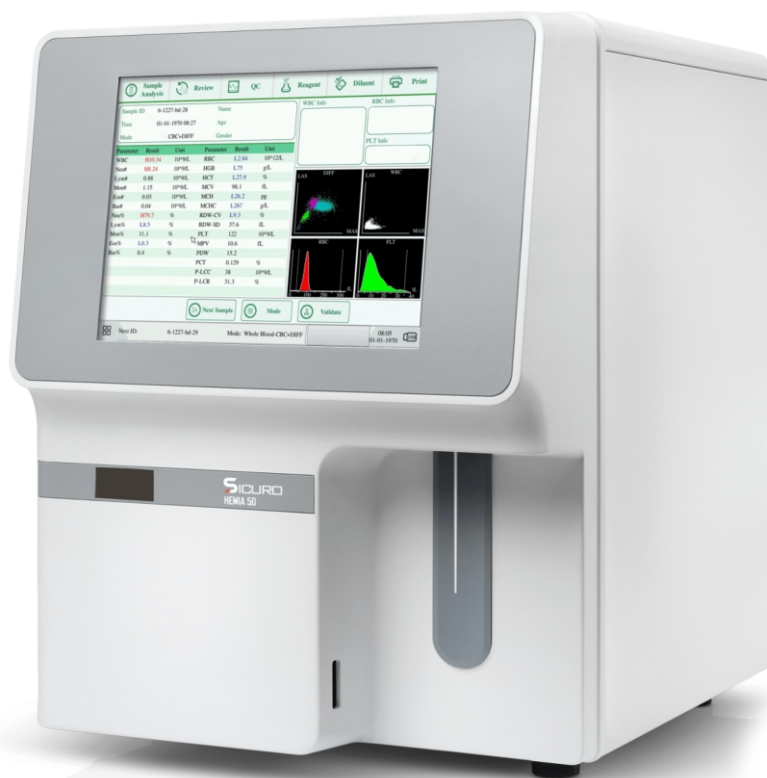


> SPECIFICATIONS

Throughput:	60 samples per hour
25 Parameters:	8 RBC items, 7 WBC items, 6 PLT items, 4 Calculated items
3 histograms:	RBC, WBC, PLT
3 analysis modes:	Whole blood mode, Micro-whole blood mode, predilute mode
Sample Volume:	≤10uL
Results Storage:	50000 results with 3 histograms
Convenient input/output:	10.4-inch touch screen, no need for an external computer
Save space:	Small footprint & Built-in lyse position.

HEMIA 5D

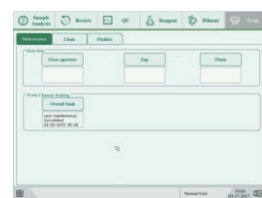
5 Part Auto Hematology Analyzer



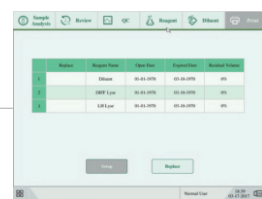
➤ User-friendly



Powerful data management



Real-time monitoring



Smart maintenance

➤ SPECIFICATIONS

Throughput:	60 samples per hour
29 Parameters:	8 RBC items, 7 WBC items, 6 PLT items, 4 Calculated items, 4 research parameters.
2 histograms:	RBC, PLT 4
Scattergrams:	LYM, MON, EOS, NEU, BAS
Sample Volume:	≤10uL
Results Storage:	50000 results with 2 histograms and 4 scattergrams
Convenient input/output:	10.4-inch touch screen, no need for an external computer. Internal & External printer, multiple USB ports for external devices.
Save space:	Small footprint & Built-in lyse position.

HEMIA 60

5 Part Auto Hematology Analyzer

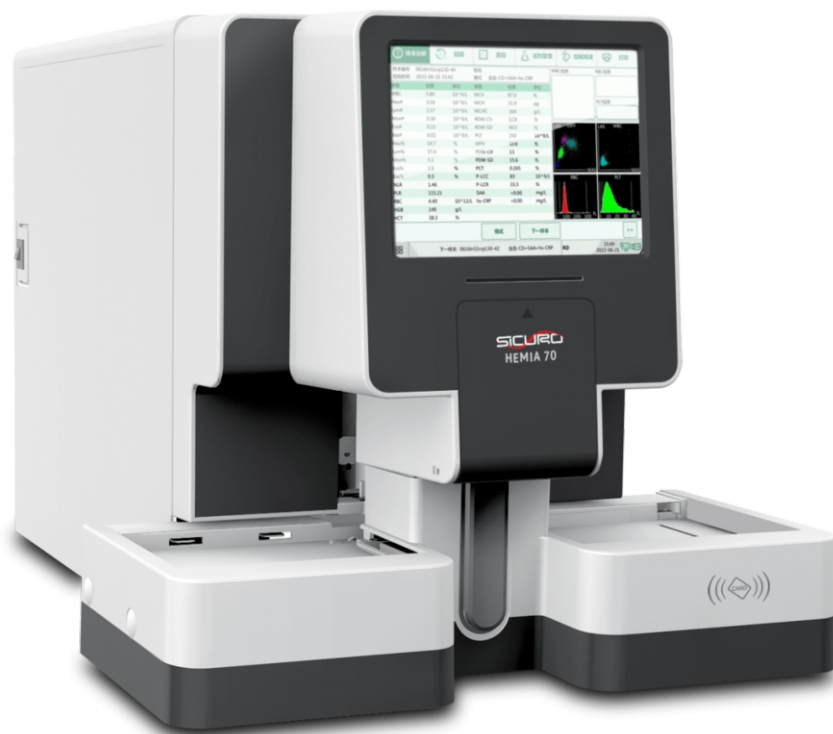


> SPECIFICATIONS

- Throughput: 60 samples/hr
- Trace blood collection, while measurement of blood conventional + W-CRP + SAA
- Automatic treatment of faults, automatic dormancy and awakening.
- Touch control display, gloves can be used to provide convenience and improve biological safety.
- Blood conventional+ W-CRP+ SAA joint test only needs 18ul, and the results are produced in one minute.
- Built-in reagent warehouse and refrigerated system, saving laboratory space.
- Tri-angle laser scattering, flow cytometry for WBC differentiation, and count Impedance for RBC and PLT count cyanide-free method for HGB.
- CT automatic correction, W-CRP/SAA results can be traced back to international reference substances

HEMIA 70

5 Part Auto Hematology Analyzer



> SPECIFICATIONS

- Throughput: 80 samples/hr
- Trace blood collection, while measurement of blood conventional + W-CRP + SAA
- Provide 40 detection parameters, support SAA/CRP ratio
- Automatic treatment of faults, automatic dormancy and awakening.
- Touch control display, gloves can be used to provide convenience and improve biological safety.
- Blood conventional+ W-CRP+ SAA joint test only needs 18ul, and the results are produced in one minute.
- Built-in reagent warehouse and refrigerated system, saving laboratory space.
- Tri-angle laser scattering, flow cytometry for WBC differentiation, and count Impedance for RBC and PLT count cyanide-free method for HGB.
- CT automatic correction, W-CRP/SAA results can be traced back to international reference substances

HEMIA Reagents



3 Parts

Diff Lyse (500ml)

Diluent (20L)

Probe

Cleanser (50ml)

5 Parts

LH Lyse 200ml

Diff Lyse (500ml)

Diluent (20L)

Probe Cleanser (50ml)

BLOOD GROUPING

Anti-Sera



- Anti-A,B,D
- Anti-A
- Anti-B
- Anti-AB
- Anti-D
- Anti-Human globulin
- Bovin Albumin

RAPID TEST KITS

Rapid Test Kits for Infectious Diseases



**HIV Antigen/Antibody
HIV I/II**



**Hepatitis C Virus Antibody
ANTI-HCV**



**Syphilis Antigen/Antibody
ANTI-TP**

Rapid Test Kits for Malaria



Malaria PF/PAN



Malaria PF/PV



Malaria PF

The CHEMIA Series: Auto Chemistry Analyzers

The CHEMIA Series is a sicuro family of fully automated benchtop & floor standing chemistry analyzers designed to meet the diverse needs of Clinical Chemistry laboratories with varying workloads.

Each analyzer delivers exceptional performance and reliability from the compact CHEMIA 100, ideal for low- to medium-volume labs or as a backup for larger facilities, to the high-performance CHEMIA 200, 300, and 400 models designed for mid- to high-volume labs. With throughputs of 100, 200, 300, and 400 tests per hour respectively, the CHEMIA Series ensures efficiency across all laboratory scales.

Standout features include high-end functionalities comparable to larger systems, advanced cooling systems for optimal performance in the tropics, and small-batch sample management with double cooling chambers in the CHEMIA 300 and 400.

These innovations enhance diagnostic accuracy, reliability, and operational flexibility, making the CHEMIA Series a trusted choice for laboratories seeking quality and efficiency.

CHEMIA 200

Auto Chemistry Analyzer

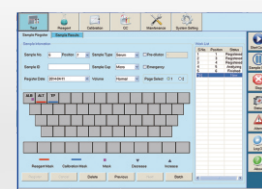


➤ SPECIFICATIONS

- Compact cooling system for optimal performance.
- Auto cuvette washing for enhanced convenience.
- Removable reagent disk for easy handling.
- Simultaneous dual-wavelength measuring up to 200 tests per hour.
- 7-step and 2-stage washing station for efficient cuvette cleaning.
- Guarantees result accuracy and extends cuvette lifespan.
- Automatic dilution and retest when results are out of range, eliminating manual operation.
- User-friendly operation software with low PC requirements.
- Large reagent and sample compartments for increased capacity.

CHEMIA-220^{pro}

Auto Chemistry Analyzer



> SPECIFICATIONS

Multifunctional precision sampling probe

- External & internal mirror polish, external & internal probe washing
- Dedicated sampling probe equipped with sensitive liquid sensor, timely feedback of reagent & sample residuals
- Collision protection, automatic probe depth adjusting

Excellent mixer design

- Teflon coating mixer. No water dropping (reducing carry-over)
- Excellent mixing effect with standard mixing procedure

High precision ceramic syringe

- Permanent ceramic piston
- Accurate dispensing as low as 0.1 µL

Reagent & sample tray

- 80 reagent positions, 40 sample positions
- Non-stop cooling system with peltier pad inside, 24 hours 2°C-14°C
- Bar code reader(optional)

Reaction tray

- 44 reaction cuvettes
- Reaction volume as low as 150 µL
- Stable & accurate temperature($37 \pm 0.1^\circ\text{C}$) for reaction

Advanced operating system

- User friendly software interface simple, easy-to-operation
- Sample automatic dilution(decrease, increase, normal)
- Reaction result automatic checking and warning, calibration result automatic checking, warning alarm log
- Linear & nonlinear calibration, Multi-points calibration up to 8 points
- Quality control apply to westgard, L-J plot, cumulative

CHEMIA 300

Auto Chemistry Analyzer



> SPECIFICATIONS

- Compact cooling system for consistent performance and reliability
- Auto cuvette washing ensures enhanced cleanliness and accuracy
- 120 reaction vessels for high throughput.
- Simultaneous dual-wavelength measuring up to 300 tests per hour
- 105 sample positions to accommodate multiple tests
- 81 reagent positions for extended operation
- Two analysis methods: Colorimetry and turbidimetry
- Constant throughput of 300 tests /hr for high efficiency
- 13 wavelengths for optimal Max selection tailored to specific tests
- User-friendly and intelligent software interface for seamless operation.

CHEMIA 400

Auto Chemistry Analyzer



> SPECIFICATIONS

- Compact cooling system for consistent performance and reliability.
- Auto cuvette washing ensures enhanced cleanliness and accuracy.
- Simultaneous dual-wavelength measuring up to 400 tests per hour.
- 120 reaction vessels for high throughput
- 105 sample positions to accommodate multiple tests.
- 90 reagent positions for extended operation.
- Supports over 5 directional methods for diverse applications.
- Two probes and two mixing bars for efficient sample processing.
- Constant throughput of 400 tests /hr for high efficiency.
- 13 wavelengths for optimal Max selection tailored to specific tests.
- User-friendly and intelligent software interface for seamless operation.

CHEMIA Reagents



PANEL	REAGENT
Hepatic Panel	ALB, AST, ALP, ALT, TBA, PA, GGT, D-BIL, T-BIL, CHE, ADA
Inorganic Panel	Na, Ca, Mg, Zn
Liver fibrosis	UA, UREA, CO2,
Cardiac Panel	LDH, a-HBDH, CK, CK-MB, MYO, HCY,
Diabetes Panel	HBA1C, G-6-PD, GLU(OX)
Anemia Panel	Fe, Ferritin
Lipid Panel	TG, CHOL, HDL-C, LDL-C
Inflammation Panel	CRP, HS.CRP, D-Dimer
Pancreatitis Panel	-AMY

Ordering Information

S/N	CODE NUMBER	ITEM	RATIO (R1/R2)	KIT SIZE	REFERENCE NUMBER
1.	ALBU-CR0200	Albumin BCG	Single reagent + std	2X100ml	12201200
2.	BITD-CR0210	Total & Direct Bilirubin	R1, R2 & R3	2X100ml+10ml	12101200 12101210
3.	BITD-CR0265	Total & Direct Bilirubin	R1, R2, R3 & R4	R1 50ml, R2 15ml, R3 100ml & R4 100ml	12001265
4.	HBAC-CR0025	Glycated hemoglobin (50tests) (without control and calibrators)	R1 & R2	R1 1.25ml R2 3.75ml	12001225
5.	HBAC-IE0025	Glycated hemoglobin (25tests) (without control)	25 tests	25 tests	12011225
6.	CHSL-CR0200	Cholesterol PAP	Single reagent + std	4x50ml	12300300 12310100
7.	HDLL-CR0050	HDL Cholesterol	Single reagent + std	2x25ml	12300350 12310500
8.	HDLL-CR0060	HDL-Direct with Calibrator	2 reagent + std	2x30ml	12300360 12311500
9.	CRCO-CR0200	Creatinine	R1 & R2 + std	2x100ml	13200200 13200110
10.	TGML-CR0200	Triglycerides	Single reagent + std	4x50ml	12400200 11401500
11	URSL-CR0200	Urea	R1, R2, R3, + std	2x100ml	12200100 12210100
12	URSL-CR0100	Urea UV	R1, R2 + std	4x25ml	22200100 22210100
13	URUR-CR0100	Urea/BUN	Single reagent + std	4x25ml	32200100 32210100
14.	AUML-CR0200	Uric acid	Single reagent + std	4x50ml	12410250 12201140
15	PASL-CR0100	ALP	R1 and R2	4x25ml	1220050
16	PROB-CR0200	Total Protein	Single reagent + std	2x100ml	12200200 11210200
17	AMSL-CR050	Amylase	Single reagent	2x25ml	1220050
18	ASSL-CR0122	AST	R1-25ml R2-25ml	4x25ml	12200122 12200202
19.	ALSL-CR0122	ALT	R1-25ml R2-25ml	4x25ml	12004005 12002005
20	CHLO-CR0100	Chloride	Single reagent + std	4x25ml	12210100 12220100

21	MAGN-CR0100	Magnesium	Single reagent + std	4x25ml	13210100 13220100
22	ZINK-CR0050	Zinc	Single reagent + std	2x25ml	13200050 1330150
23	PHOS-CR0100	Phosphorus	Single reagent + std	2x50ml	14200100 1330100
24	POTM-CR0100	Potassium	Single reagent + std	4x25ml	15210100 15220100
25	SODM-CR0100	Sodium	Single reagent + std	4x25ml	16210100 16220100
26	CRPR-CR0100	CRP plus control	Single reagent + calibrator	100T	17200100
27	GASL-CR0100	GGT	Single reagent	4X25ml	18210100
28	CALA-CR0100	Calcium	Single reagent + std	2x50ml	19210100 19220100
29	GPSL-CR0200	Glucose	Single reagent + std	2x100ml	13200200 12200005
30	CKSL-CR0050	CK-NAC	R1&R2	2x25ml	14200050
31	CKMB-CR0050	CKMB	R1&R2	2x25ml	15200050
32	LLSL-CR0050	LDH-P	R1&R2	2x25ml	16200050
33	LIPS-CR0050	Lipase	R1&R2	2x25ml	17200050
34	GPDH-CR0050	G6PDH	R1&R2	1x10ml	18200050

Q-Lyte-60⁺

Auto Electrolyte Analyzer



> SPECIFICATIONS

- 60 tests/hr
- 5.6-inch touch screen
- LCD color touch screen
- Closed system with original reagents
- Real-time display reagent volume
- L-j graph for QC management

Electrolytes Reagents

DS-I (No.3) STD A & STD B (390/160 ml)
3-Level QC (3*10ml)

Test Combinations

K⁺, Na⁺
K⁺, Na⁺, Cl⁻
K⁺, Na, Cl⁻, iCa²⁺, Tca, pH
K⁺, Na, Cl⁻, Li⁺
K⁺, Na⁺, Cl⁻, iCa²⁺
K⁺, Na⁺, Cl⁻, iCa²⁺, pH, Tca, TCo₂, AG, KT

IMMUNOFLUORESCENCE

The IMMUNIA Series: Quantitative Immunofluorescence Analyzers

The IMMUNIA Series includes advanced POCT analyzers designed for quick, reliable, and efficient diagnostic results in critical care settings. The IMMUNIA 100 is a compact bench-top analyzer tailored for small labs and hospitals, delivering dependable results across departments such as the ER, ICU, pediatrics, cardiology, and gynecology.

Its advanced design ensures efficiency and accuracy where rapid decisions are critical. The IMMUNIA STAT, a handheld fluorescence immunoassay analyzer, offers exceptional portability and flexibility, making it ideal for clinicians and lab technicians in need of rapid, cost-effective diagnostics.

With its ability to deliver results within minutes and features like efficient calibration and quality control, it significantly reduces turnaround time in emergency and intensive care environments.

IMMUNIA 100

Quantitative Immunofluorescence Analyzer

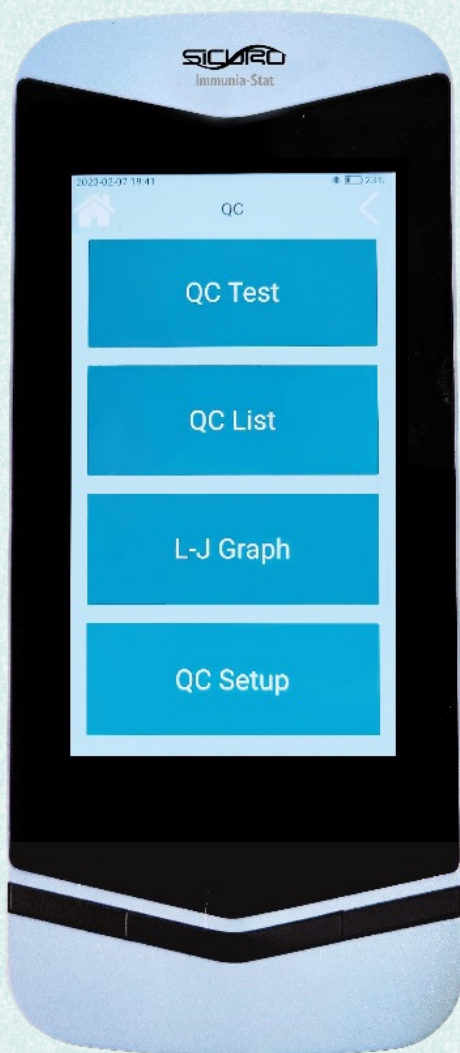
➤ SPECIFICATIONS

- Rapid testing with results in 3-15 minutes
- Easy operation with 5.0-inch touch screen
- Auto-calibration control and registration
- Compact design with a small footprint
- Room temperature reagent storage between 10-30°C
- Maintenance-free non-liquid system
- Flexible sample types including whole blood serum plasma and body fluid
- Versatile printing with internal and external printer support
- Extensive test panels including COVID-19 Thyroid Cardiac and more
- High data capacity with storage for up to 50,000 results and multilingual support



IMMUNIA Stat

Quantitative Immunofluorescence Analyzer



➤ SPECIFICATIONS

- Rapid testing with results in 3-15 minutes
- Easy operation with 5.0-inch touch screen
- Auto-calibration control and registration
- Compact design with a small footprint
- Room temperature reagent storage between 10-30°C
- Maintenance-free non-liquid system
- Flexible sample types including whole blood serum plasma and body fluid
- Versatile printing with internal and external printer support
- Extensive test panels including COVID-19 Thyroid Cardiac and more
- High data capacity with storage for up to 50,000 results and multilingual support

IMMUNIA Parameters

PANEL	REAGENT
Inflammation	PCT, IL-6, CRP, hs-CRP
Cardiac Markers	hs-CRP, NT-proBNP, cTnI, Myo, CK-MB, cTnI/CK-MB/Myo, D-Dimer
Diabetes	HbA1c
Thyroid	TSH, FT3*, FT4*, T3, T4
Anemia	Ferritin, Fe
Pregnancy	BHCG
Fertility	LH, FSH, Prolactin, Progesterone, Testosterone, AMH*
Tumor Markers	PSA*, f-PSA*, AFP*, CEA*
Drug Testing	MET, KET, MOP, MDMA, COC, THC, K2, K3, K4, MOP-MET-KET in 1

MPR-110

Eliza Plate Reader



> SPECIFICATIONS

Microplate Compatibility: Supports various geometries, including flat (F), round (U), and flat-bottom plates, enhancing versatility.

Fast Plate Reading: Capable of rapid plate reading within seconds for efficient operation.

Bichromatic Readings: Provides bichromatic optical readings for improved accuracy and reliability.

Data Storage: Stores up to 9,600 patient results and 250 test programs, facilitating extensive data retention.

Patient Reporting: Generates detailed patient reports, including PID and name, for enhanced traceability and documentation.

Measurement Range: Linear measurement range of 0.000–3.500 absorbance units (A), accommodating diverse assay requirements.

User Interface: Equipped with a 7-inch color touchscreen display and keypad, ensuring an intuitive human-machine interface.

W206

Eliza Microplate Washer



Aspiration System: Equipped with a sweep function for thorough liquid removal.

Adjustable Washing Cycles: Programmable from 1 to 99 cycles for flexible cleaning protocols.

Liquid Monitoring: Features an automatic liquid monitoring system to prevent overflows or dry runs.

Multi-Buffer Module: Supports multiple buffer options for diverse washing requirements.

Plate Compatibility: Suitable for flat (F), round (U), or conical (V) bottom plates and standard 96-well plates.

Residual Aspiration Volume: Ensures minimal leftover liquid with $<2 \mu\text{L}$ residual aspiration volume.

Soaking/Shaking Time: Adjustable soaking/shaking duration from 0 to 999 seconds for optimal cleaning efficacy.

Dispensing Volume: Adjustable from 10 to 3000 μL in precise 1 μL increments for accurate reagent dispensing.

BioCRIT-24

Hematocrit Centrifuge



Rotor Capacity: Accommodates 24 capillary tubes (75mm/40mm)

Maximum Speed/RCF: 12,000 RPM / 14,119 g

Type: High-efficiency brushless DC motor for reliable performance and minimal maintenance

Display: Large back-lit lid display for clear visibility of parameters and status

Speed Setting: Adjustable from 500 to 12,000 RPM in increments of 100 RPM for precision control.

Time Setting: Programmable up to 12 minutes, allowing customizable operation durations

User Convenience: Parameters can be preset to enhance ease of use and streamline operations.



Sicuro House, 19 East West Rd, Portharcourt, Nigeria.
Email: info@sicurobio.com



IVD

