

# Technical Specifications

## Principle

Tri-angle laser scattering, flow cytometry for WBC differentiation and count  
Impedance for RBC and PLT count  
Cyanide-free method for HGB

## Parameters

26 parameters: WBC, LYM%, MON%, NEU%, BAS%, EOS%, LYM#, MON#, NEU#, EOS#, BAS#, RBC, HGB, HCT, MCV, MCH, MCHC, RDW-CV, RDW-SD, PLT, MPV, PDW-CV, PDW-SD, PCT, P-LCR, P-LCC  
4 research parameters: LIC%, LIC#, ALY%, ALY#  
2 histograms for RBC and PLT  
4 scattergrams for WBC differential

## Throughput

60 samples per hour

## Calibration

Manual, auto and fresh blood calibration

## Quality control

3 level QC,  
LJ graph, XB

## Sample volume

CBC+ DIFF mode: 20µL  
Prediluted mode: 20µL

## Reagents

Diluent, DIFF lyse, LH lyse, probe cleanser

## Performance

Parameters	Precision (CV)
WBC	≤ 2.0% (4.0 - 15.0)×10 <sup>9</sup> /L
RBC	≤ 2.0% (3.5 - 6.0)×10 <sup>12</sup> /L
HGB	≤ 1.5% (110.0 - 180.0)g/L
MCV	≤ 1.0% (70.0 - 120.0)fL
PLT	≤ 4.0% (150.0 - 500.0)×10 <sup>9</sup> /L

## Printout

Built-in thermal printer  
Support external printer, PCL6

## Maintenance

Sample probe auto-cleaning

## Temperature

10°C-30°C

## Interface

4 USB ports, 1 Network port, 1 DB9 serial port  
HL7 protocol, support bi-directional LIS connection

## Blockage clear

High voltage, high pressure flush

## Power

AC 100-240V, 50/60±1Hz

## Dimension

D430mm×W350mm×H430mm

## Weight

28kg

## Display

10.4-inch color touch screen (LCD)  
Resolution: 800×600

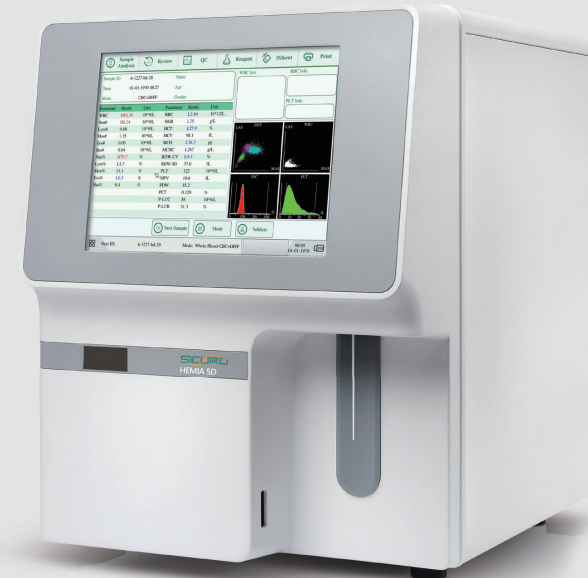
## Storage

50,000 sample results with scattergrams and histograms

Parameters	Linearity range
WBC	(0-100.0)×10 <sup>9</sup> /L
RBC	(0-8.00)×10 <sup>12</sup> /L
HGB	(0-250)g/L
PLT	(0-1000)×10 <sup>9</sup> /L

# HEMIA 5D

## 5 Part Auto Hematology Analyzer



## 5 PART AUTO HEMATOLOGY ANALYZER

## Sicuro Bioengineering Ltd

Add: Sicuro House, 19 East West Rd,  
Portharcourt, Nigeria.  
Email: info@sicurobio.com



## Compact Yet Powerful



### Reliable hardware, accurate results

- Long life semi-conductor laser to differentiate WBC into 5 parts
- Ceramic syringe to assure precise reagent or sample aspiration
- Famous liquid parts (SMC valves and KNF pump) and simplified liquid system



### Convenient printout solution

- Built-in thermal printer
- Support external printer via USB
- Editable print template



### Cost-effective

- 3 reagents (2 Lyse, 1 Diluent) only
- Lyses placed inside for space saving



### Built-in barcode scanner (Optional)

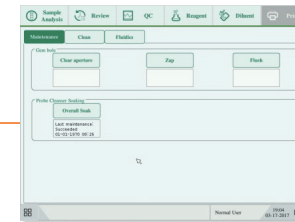
- Input patient data automatically
- Easy management for reagents

## User-friendly



### Powerful data management

- Flag information offered for better diagnosis
- Store 50,000 results, easy data transmission
- 6 short-cut icons, more efficient



### Real-time monitoring

- Automatically monitor reagent status
- Including residual volume and expired date
- Strictly monitor temperature, voltage, pressure and current

Reagent	Reagent Name	Open Date	Expired Date	Residual Volume
1	Diluent	01-01-2020	03-31-2020	95%
2	LYSE Lyse	01-01-2020	03-31-2020	95%
3	LYSE Lyse	01-01-2020	03-31-2020	95%

### Smart maintenance

- Easy routine maintenance
- Hardware self-checking
- One-click for basic trouble shooting